

FlingIt Quick Start Guide

Version 1.0, Pocket PC

Table of Contents

What is FlingIt?	1
System Requirements	1
Step-by-Step Instructions	1-8
• Getting Started	1
• Installing FlingIt	2
• Flinging Web Pages	2
• The FlingIt Console	4
• Viewing Your “Flung” Web Pages on the Handheld Computer	5
Additional Support	8

What is FlingIt™?

FlingIt allows you to “fling” – copy in its entirety – a web page from your desktop computer to your Pocket PC handheld. You may then view and read the web page on your handheld at any time you’d like. FlingIt works great for news stories, encyclopedia snippets, and color photos, as well as other additional educational resources.

System Requirements

- Pocket PC Compatible Handheld.
 - Windows 98 or higher, running Microsoft ActiveSync.
 - Internet Explorer 5.0 or higher.
-

Getting Started

This document is divided into two main sections:

1. The first section describes how to use FlingIt on Windows-based desktop computers.
 2. The second section describes how to view your “flung” web pages on the handheld.
-

Installing FlingIt

1. Open the FlingIt installer by double-clicking it.
2. Select the folder to install FlingIt to. The default folder is in the Program Files folder. Click **Install** (Figure 1).

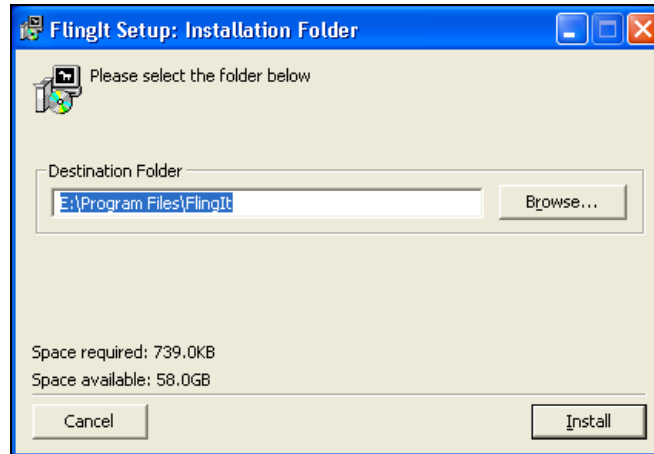


Figure 1

3. Once the installation is complete, click **Close** (Figure 2).

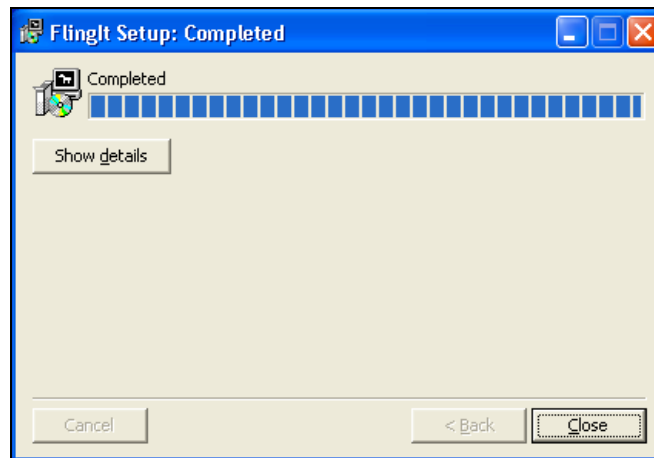


Figure 2

4. You are now ready to use FlingIt.

Flinging Web Pages

1. First, synchronize your Pocket PC to your desktop computer through ActiveSync.
2. On your desktop computer, open Internet Explorer and find a website you would like to send to your handheld. Keep in mind that there are three types of websites that might have unexpected results:
 - a. Websites that are password protected will not work.

- b. Websites with numerous frames will be difficult to view on the handheld
 - c. Sites containing any animation, sound, etc. will not display said effects on the handheld.
3. Click the **FlingIt** icon (Figure 3).

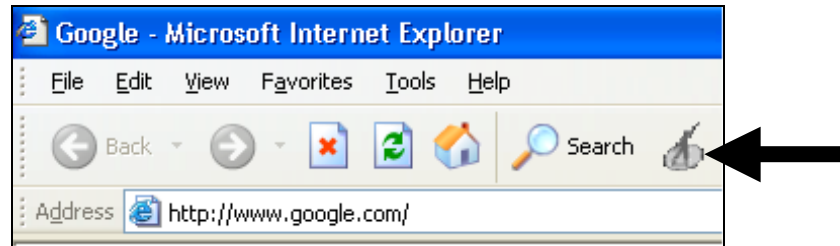


Figure 3

4. A number of windows will flash. This is FlingIt working to bundle, compress, and prepare the site for distribution to the handheld. (Some large sites with numerous links and graphics can take a long time, especially with a slow connection speed.)
 5. Once your website is prepared, the following window (Figure 4) will flash across your screen and then disappear. You are now ready to view the website on your handheld.

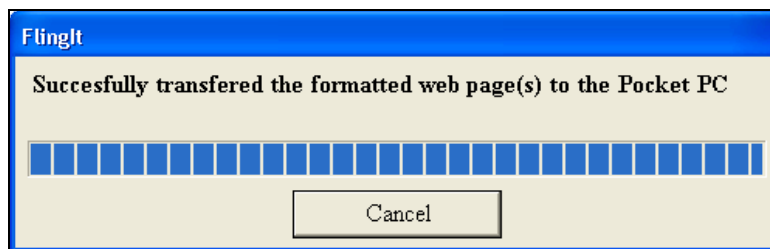


Figure 4

6. If your Pocket PC is not synchronized through ActiveSync, you will get the following screenshot (Figure 5). A copy of the website is NOT sent to your handheld; it is instead saved in the FlingIt Console. Click **OK**.

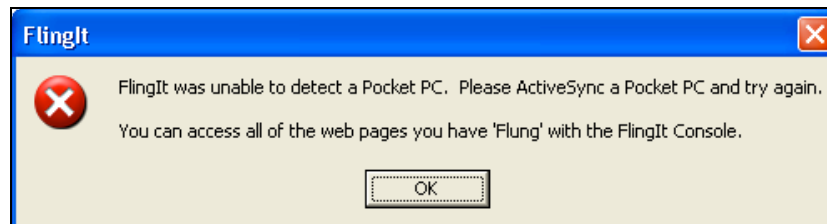


Figure 5

The Flingt Console

All “flung” web pages are saved in the Flingt Console.

1. One great thing about the Flingt console is if your Pocket PC is not synchronized to your desktop computer when you fling a web page, the web page will be stored in the Flingt Console for later use.
2. To open the Flingt Console, double-click the Flingt Console icon, located on the Desktop. Flingt Console opens in a new window (Figure 6)

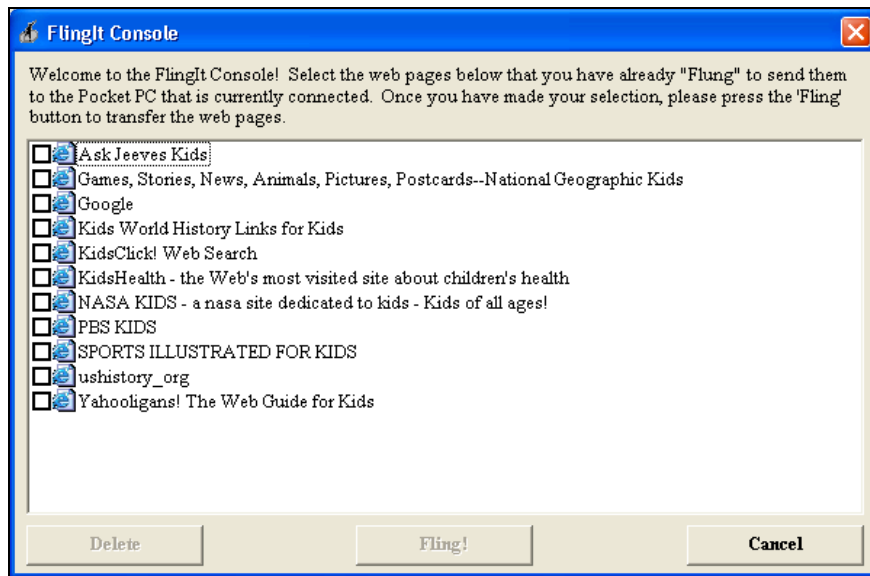


Figure 6

3. ActiveSync your Pocket PC. Then, click the web pages you would like to “fling” (Figure 7), and click **Fling!**.

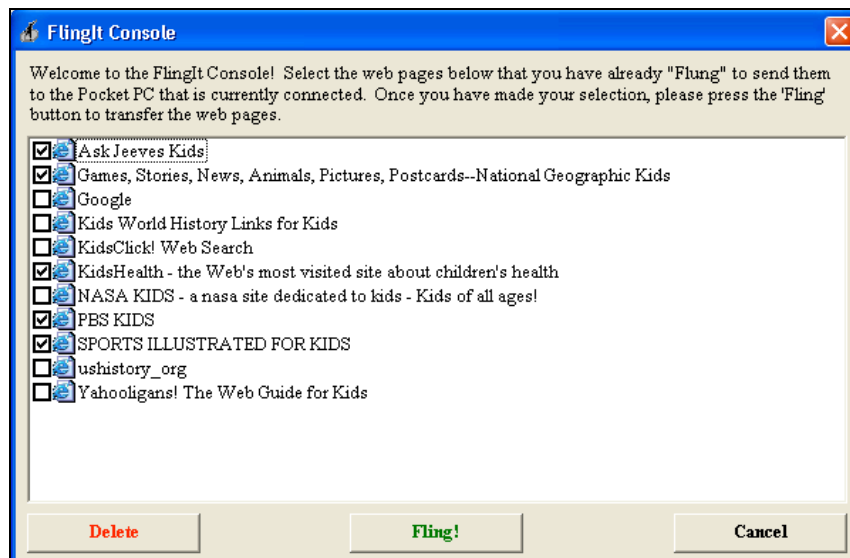


Figure 7

4. The web pages you selected to “flung” are sent to your Pocket PC.

Viewing Your “Flung” Web Pages on the Handheld

The easiest way to view your “flung” web pages is through HLE Project. (If you do not have HLE Project, skip ahead to the next section)

1. Open **HLE Project**. Login.
2. Tap the **Tools** menu, then tap **Import Node....** (Figure 8)

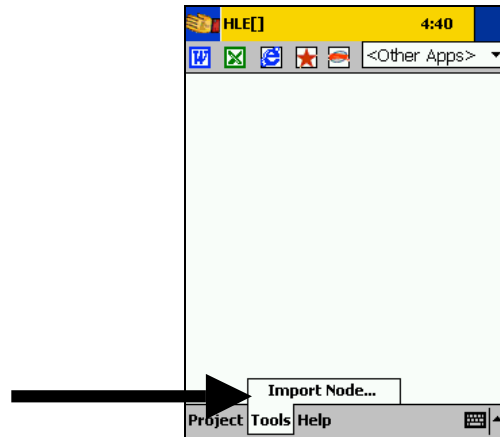


Figure 8

3. Tap the **<Select file type>** box to drop down a list of file types, then tap **Website**. (Figure 9)

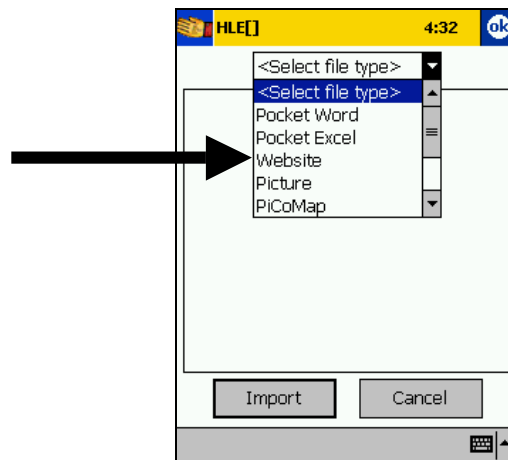


Figure 9

4. A My Documents folder appears. Double-tap this folder, then double-tap the FlingIt folder, and a list of your “flung” web pages appears. (Figure 10)

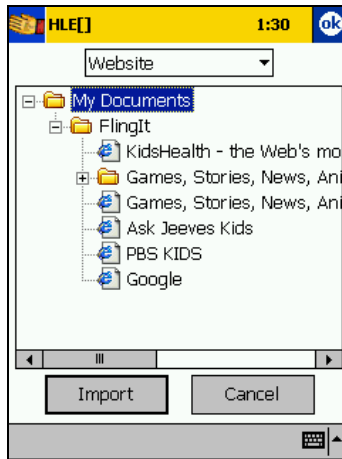


Figure 10

5. Select the web page you would like to view. Tap **Import**.
6. You return to your HLE Project canvas, and a Pocket Internet Explorer node has been placed there. (Figure 11) This is your “flung” web page.

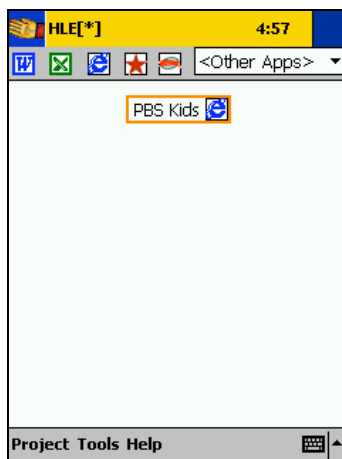


Figure 11

7. Tap this node to view the “flung” web page. (Figure 12)



Figure 12

8. Best of all, this web page is now part of your HLE Project, and you can refer to it whenever you like!

Using File Explorer to View your “Flung” Web Pages

Another way to view “flung” web pages is to open them in File Explorer.

1. On your Pocket PC, open File Explorer by tapping the **Start Menu** → **Programs** → **File Explorer**. (Figure 13)

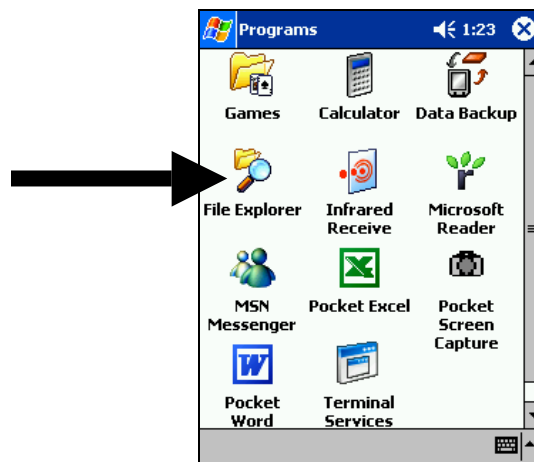


Figure 13

Note: If you cannot find File Explorer in the Programs folder, it may be listed in the **Start Menu**.

2. Tap the miniature handheld icon near the top of the screen, and select **My Device** (Figure 14).

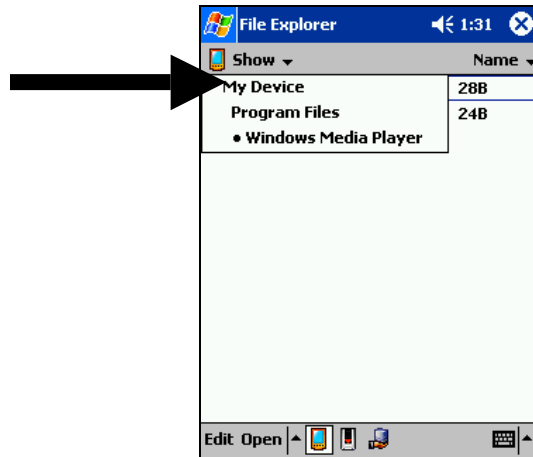


Figure 14

3. Tap the **My Documents** folder.
4. Tap the **FlingIt** folder.
5. Your “flung” web pages are listed as Pocket Internet Explorer files (Figure 15).

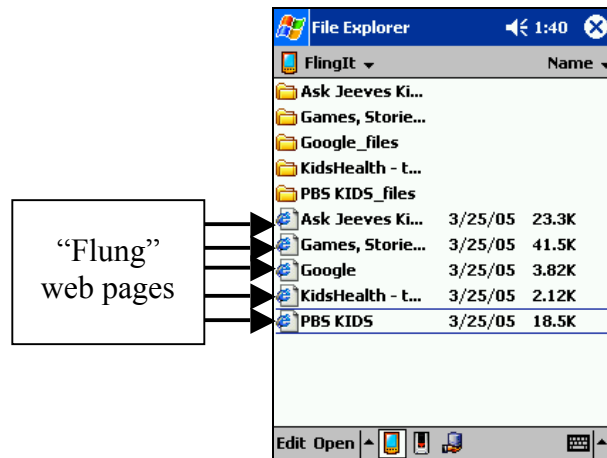


Figure 15

6. To view one of your “flung” web pages, tap it. Pocket Internet Explorer opens, displaying your web page.

Additional Support

Additional support and user information can be found at <http://www.goknow.com/Support/>.

If you have any questions or concerns, please contact: support@goknow.com.