

FlingIt Pro Quick Start Guide

Version 2.5.0

Table of Contents

What is FlingIt?	1
System Requirements	1
Before Using FlingIt	2
Step-by-Step Instructions	2-13
• Getting Started	2
• Clarifications/Known Issues	2
• Setting up FlingIt for the Windows Desktop	3
• Flinging Web Pages from Windows	5
• Transferring Sites to Handheld (Windows)	7
• Setting up FlingIt for the Macintosh Desktop	8
• Flinging Web Pages from a Mac	8
• Transferring Sites to Handheld (Mac)	9
• Using FlingIt on the Handheld Computer	11
○ Opening a Web Page	11
○ Viewing Downloaded Sites on Handheld	11
○ The Toolbar	12
○ Menus	12
Additional Support	13

What is FlingIt?

FlingIt™ allows you to “fling” – copy in its entirety – a web page from your desktop computer to your Palm handheld. You may then view and read the web page on your handheld at any time you’d like. FlingIt works great for news stories, encyclopedia snippets, and color photos, as well as other additional educational resources.

System Requirements

- Palm OS Compatible Handheld with OS version 3.5 – 5. (Palm OS 4.1 – 5 recommended.)
- **Macintosh OS 9.x:** (Macintosh OS X recommended)
(See “known issues” below)
Palm Desktop 4.1.

Internet Explorer 5.0 or higher

- **Macintosh OS X:** (See “known issues” below)
Palm Desktop 4.1
One of the following Web browsers: Internet Explorer 5.0 or higher, Safari, Camino, Chimera, OmniWeb, Opera, Mozilla (Netscape does NOT work), or iCab (Internet Explorer recommended.)
- **Windows:** Windows 98 or higher, running Palm Desktop 4.0.1 or higher. (Palm Desktop 4.1 recommended)
Internet Explorer 5.0 or higher.
- 234 KB memory on Handheld needed for full installation.
(file(s) include: Flinglt.prc, SysZLib.prc)

Before using Flinglt

Flinglt must be installed onto your desktop computer AND your handheld device before it will properly work. While Flinglt sites may be beamed from handheld to handheld freely, assuming that each handheld has Flinglt installed, to initiate a transfer from a desktop computer to handheld Flinglt must also be installed on said desktop computer.

Getting Started

1. This document is divided into three main sections.
2. The first two sections describe how to use Flinglt on either Macintosh or Windows-based desktop or laptop computers.
3. The third section describes using Flinglt on the handheld. The third section applies to all users, independent of which type of desktop computer “flung” the site.

Clarifications/Known Issues

1. m130 model Palm handhelds will NOT work with Flinglt on computers running Mac OS 9.x. This is caused by an inconsistency in the way Mac OS 9.x handles the USB transfer with this particular piece of hardware.

2. Not all models of Palm OS devices work with FlingIt on Mac OS X! The following models have been incorporated into the Mac OS X FlingIt program, and tested:

AlphaSmart Dana	Palm Zire 71
Palm m125	Tungsten T3
Palm m130	Tungsten E
Palm m500	Palm Zire
Palm m505	Palm Zire 71
Palm Tungsten T	Sony PEG-TJ35
Palm Tungsten C	Sony Clie PEG-TG50

FlingIt will not work with serial handheld such as the m100, and Palm IIIc on Mac OS X

3. The Mac version of FlingIt does not operate behind a proxy server.
4. There are substantial differences in the FlingIt procedure between Macintosh and Windows. If you use both types of computers, or have both operating systems in your school, please make sure to read *both* sections below.

Setting Up FlingIt for the Windows Desktop

1. After installation, perform the following one-time setup procedure to ensure that FlingIt will work properly with possible school firewalls and proxy settings.
2. Open Internet Explorer, and click the FlingIt icon. The FlingIt icon is usually located at the rightmost end of the standard toolbar (Figure 1).

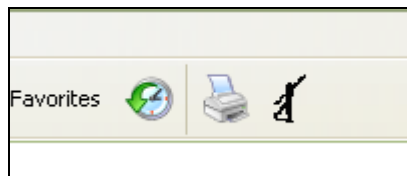


Figure 1

3. In the **Setup** menu, click **Proxy** (Figure 2).

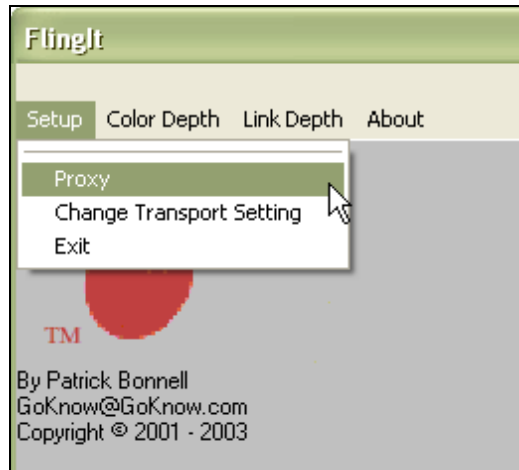


Figure 2

4. FlingIt may attempt to auto-detect your computer's proxy settings. If the desktop computer uses a proxy server, enter the information in the space provided (Figure 3). Some schools also require a username and password.

The image shows a dialog box for proxy settings. It has a light beige background. At the top left, there is a checked checkbox labeled "Use Proxy Server?". To its right is the label "Port". Below the checkbox is a text input field containing "10.62.13.1". To the right of this field is another text input field containing "8080". Below the "Use Proxy Server?" checkbox is an unchecked checkbox labeled "Username". To its right is the label "Password?". Below the "Username" checkbox is a text input field. To the right of this field is another text input field.

Figure 3

5. Finally, click **Change Transport Settings** in the **Setup** menu (Figure 4) to verify that the settings match the method your handheld uses to synchronize. (e.g. serial, USB)



Figure 4

Flinging Web Pages from Windows

1. First find a website you would like to send to your handheld. Keep in mind that there are three types of websites that might have unexpected results:
 - a. Websites that are password protected will not work.
 - b. Websites with numerous frames will be difficult to view on the handheld
 - c. Sites containing any animation, sound, etc. will not display said effects on the handheld.
2. Click the **FlingIt** icon. A new gray window opens. Under the **Color Depth** menu (Figure 5), decide whether graphics should be sent to the handheld, and if so, determine the quality.



Figure 5

3. Next click the **Link Depth** menu to determine how many linked pages connected to the page you are viewing should be sent to the handheld

(Figure 6). For example, a link depth of “1” means that you will only fling the page you are looking at. “2” would send the page you are currently viewing, AND every page connected to the page you are looking at.

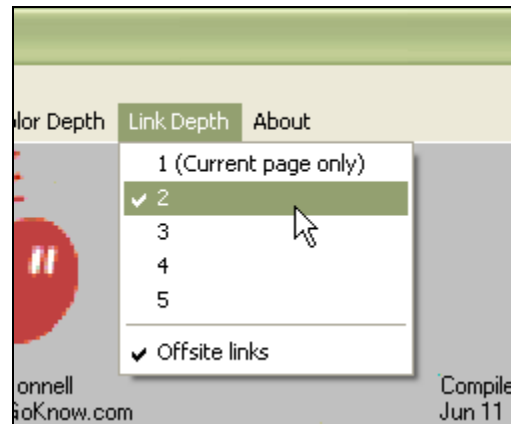


Figure 6

4. Take note that if there is a check next to **Offsite Links** in the **Link Depth** menu, all connected sites will be sent to the handheld. If the menu option is unchecked, only sites beginning with the URL of the site you are currently viewing will be sent to the handheld.
5. Now that you've set the Color Depth and the Link Depth, you're ready to "fling" the page. To initiate the process, use the mouse to click **FlingIt**. A black window with much text will appear. This screen is FlingIt working to bundle, compress, and prepare the site for distribution to the handheld. (Some large sites with numerous links and graphics can take a long time, especially with a slow connection speed.) The screenshot below (Figure 7) shows a student flinging a site about seals for later study.

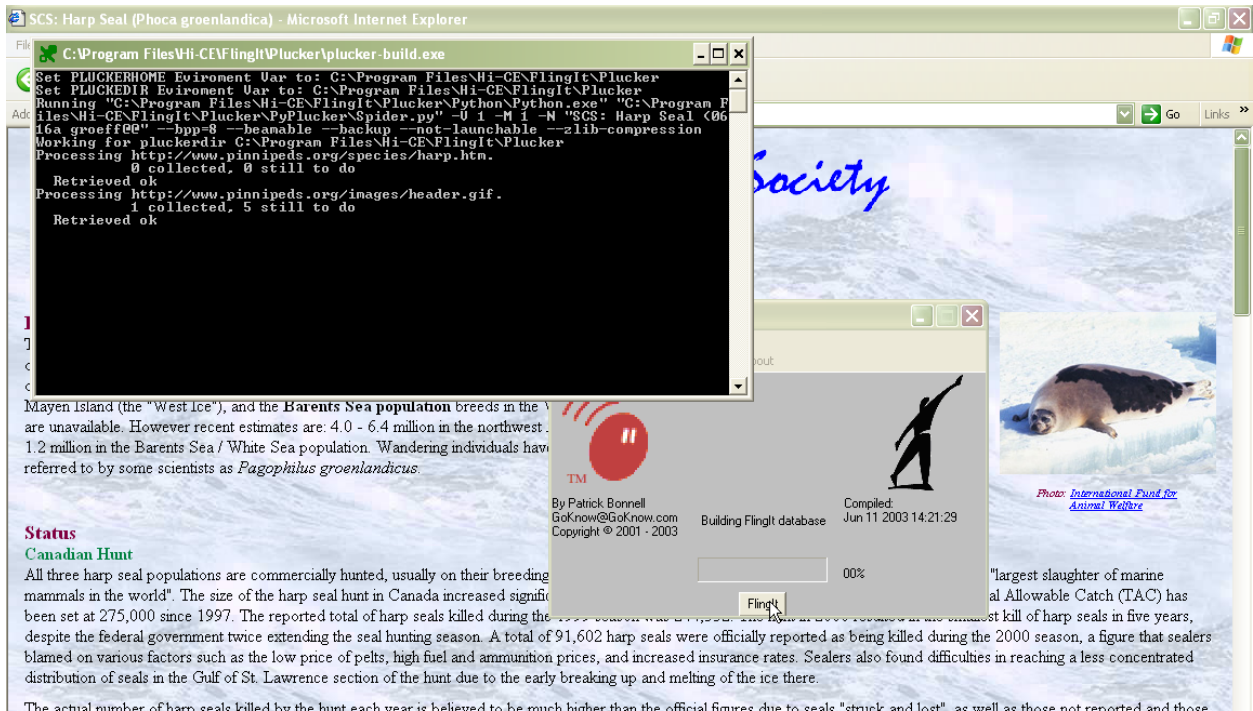


Figure 7

Transferring the Web Site to the Handheld Computer (Windows)

1. Once the FlingIt process has been initiated, you are free to navigate to other web pages.
2. Once the process of preparing the web site has been completed, the Palm Install Tool, or Palm "Quick Install Tool" (Figure 8) will appear.

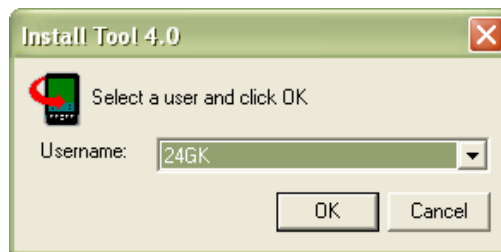


Figure 8: (Palm Desktop Install Tool)

3. Make certain that the user who should receive the web site appears in the username window.
4. Once the appropriate user is selected, click **OK**.
5. Alternatively, if you ARE using Palm Quick Install, a new window opens similar to Figure 9. The FlingIt database file, FlingIt.pdb, appears in your Files to Install. Select the user who should receive the web site from the User pull-down menu, and click **OK**.

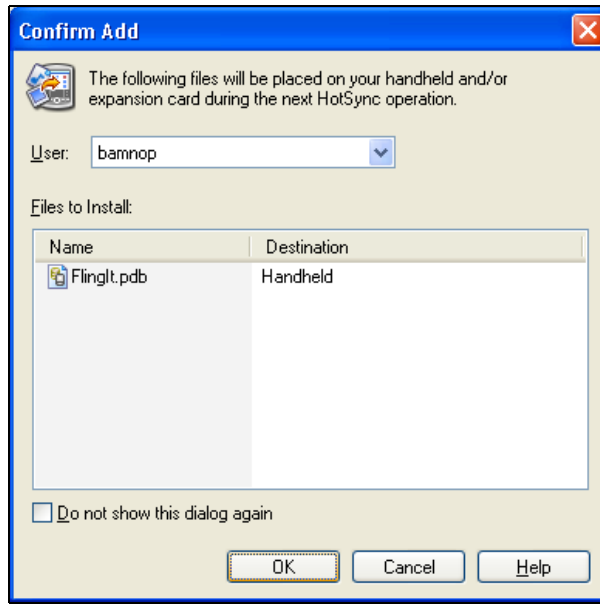


Figure 9: (Palm Desktop's "Quick Install")

6. Synchronize the handheld to transfer the Web site from the desktop or laptop computer to the handheld computer.
7. **NOTE:** You cannot "Fling" numerous sites and then synchronize once at the end. The pattern must be: Fling—Sync, Fling—Sync, and so on.

Setting Up FlingIt for the Macintosh Desktop

1. After installing FlingIt make sure that you *Quit* Internet Explorer and restart it.
2. You may also have to restart the computer for the installation to take effect.

Flinging Web Pages from a Macintosh

1. First find a website you would like to send to your handheld. Keep in mind that there are three types of websites that might have unexpected results:
 - a. Websites that are password protected will not work.
 - b. Websites with numerous frames will be difficult to view on the handheld
 - c. Sites containing any animation, sound, etc. will not display said effects on the handheld.



Figure 10: FlingIt icon as appears on OS X



Figure 11: FlingIt menu as appears on OS 9.x

1. Click the FlingIt menu. On Mac OS X, Chose the **Resolution** of the graphics (assuming you want graphics on the handheld). Next click the **Link Depth** submenu (Figure 12) to determine how many linked pages connected to the page you are viewing should be sent to the handheld. For example, a link depth of “1” means that you will only fling the page you are looking at. “2” would send the page you are currently viewing, AND every page connected to the page you are looking at.

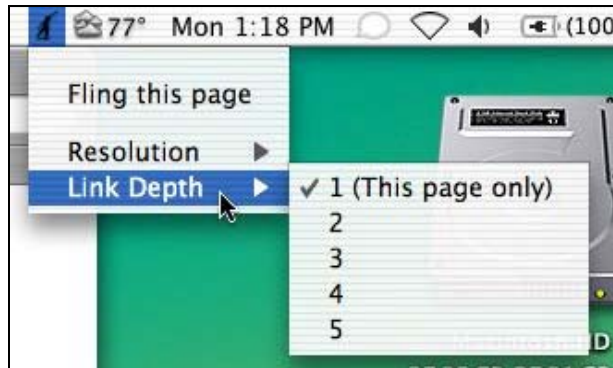


Figure 12

2. On Mac OS 9.x notice that the images and link depth options are located under **Options** (Figure 11).
3. Take note that if there is a check next to **Offsite Links** in the **Link Depth** menu, all connected sites will be sent to the handheld. If the menu option is unchecked, only sites beginning with the URL of the site you are currently viewing will be sent to the handheld.

Transferring the Web Site to the Handheld Computer (Macintosh)

1. After you have selected options for images and link depth, select **Fling this page** from the menu.
2. FlingIt will prepare the Web site (Figure 13). Time will vary depending on the size of the site, how many links you've selected, image quality chosen, and the speed of your connection.

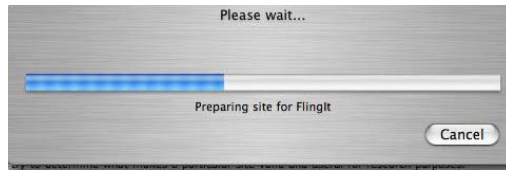


Figure 13

3. Once the site has been prepared (Figure 14), verify that the handheld is in the cradle.



Figure 14

4. Go to the FlingIt program on the handheld, and tap **Download site** (Figure 15).



Figure 15

5. The information will be downloaded to the handheld automatically. There is NO synchronization required.

Using FlingIt on the Handheld Computer

1. Once Web content has been sent to the handheld, whether it is initiated by a Windows or Macintosh computer, the following instructions apply.
2. This section will describe how to open and beam sites, as well as how to change font size, find keywords and more.

Opening a Web Page

1. There are two ways to enter FlingIt (Figure 16). If you'd like to view web content you have already sent to your handheld, tap **Open**.
2. To view your last website, tap **Last**.

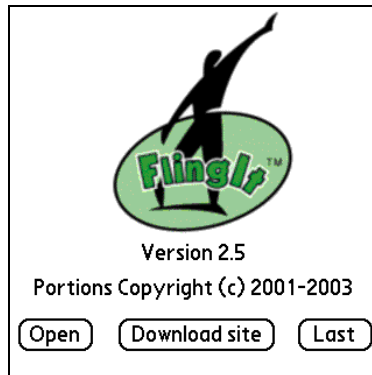


Figure 16

3. **Note:** The **Download site** button applies only to Mac users who are downloading new content to their handhelds! Windows users should act as if the **Download site** button does simply not exist!

View Downloaded Sites on your Handheld

1. Tap and hold the site to bring down a menu (Figure 17) of advanced features such as rename, categorize, and beam. Just tapping the desired site quickly will open the site for viewing by default.

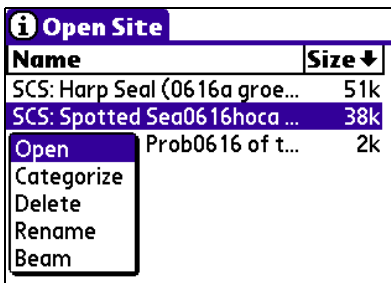






Figure 17

The Toolbar

1. There are many options available in the Toolbar (Figure 18) to enhance your viewing experience.



Figure 18

2. : Opens the Menu Bar, where you can access the Go, View and Options menus.
: Takes you to a list of previously downloaded sites – the Open Site Menu. **Tip:** This is the **best** way to switch between sites.
%: Shows what percent of the website has been read.
: Searches for particular words on the page. The left lens is **find** and the right lens is **find next**.
: Acts like a normal web browser, with back, home, and forward buttons.

Menus

The Go Menu

1. Tap the Go menu (Figure 19) to bring up:
 - **Open site:** Opens a previously downloaded site.
 - **Delete site:** Permanently deletes viewed site viewed if confirmed.
 - **Beam site:** Initiates beaming of site to receiving handheld.
 - **Download site:** Mac users only—begin transfer process.
 - **Find:** Searches for specific words in the current page.
 - **Find Again:** Searches for the next occurrence of keyword.

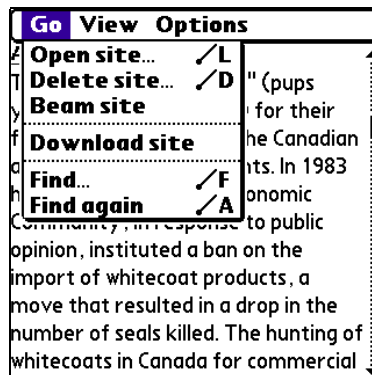


Figure 19

The View Menu

1. Tap **View** then **Details** to bring up a screen that lists the URL, as well as gives the option to remove images after the fact (Figure 20).

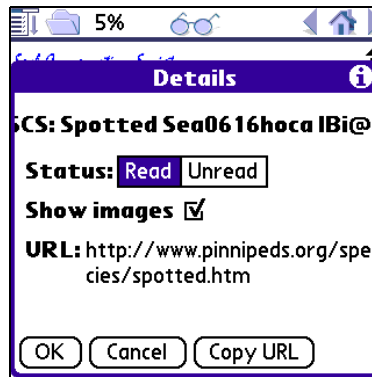


Figure 20

2. Tapping **Copy URL** will store the address in the clipboard. To paste, navigate to your favorite word-processing program and bring up the paste command. This is a great way for students to list their resources and pull up web sites on home or school desktop computers.

The Options Menu

1. The **Options** menu (Figure 21) allows you to select a number of font sizes and formatting options.



Figure 21

Additional Support

Additional support and user information can be found at <http://www.goknow.com/Support/>.

If you have any questions or concerns, please contact: support@goknow.com.